

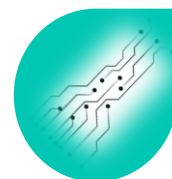


**CRYSTALOX** is High Purity Alumina manufactured by Alum process and characterized by homogeneous and highly pure cristal structure.

## TYPICAL PROPERTIES

Purity  $Al_2O_3$  >**99,99%**

Crystal Structure		Gamma
BET Specific surface area	m <sup>2</sup> /g	120
Particle size distribution (D50)	μm (Cilas, laser diffraction)	35
Bulk Density		
Tapped density		

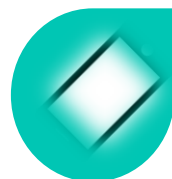


## Main applications

- Polishing
  - CMP for microelectronics
- Sapphire production
  - Watch tops
  - Phone
- Sapphire substrates for LED

## CHEMICAL PURITY

	PPM	%
Fe	3	0,0003
Na	10	0,0010
K	16	0,0016
Si	7	0,0007
Cr	<1	<0,0001
Mg	<1	<0,0001
Ca	2	0,0002



All data are typical values, can't be considered as contractual